

MARINE SAFETY INFORMATION BULLETIN

Volume XXIV Issue: 071

Time: 3:00 p.m.

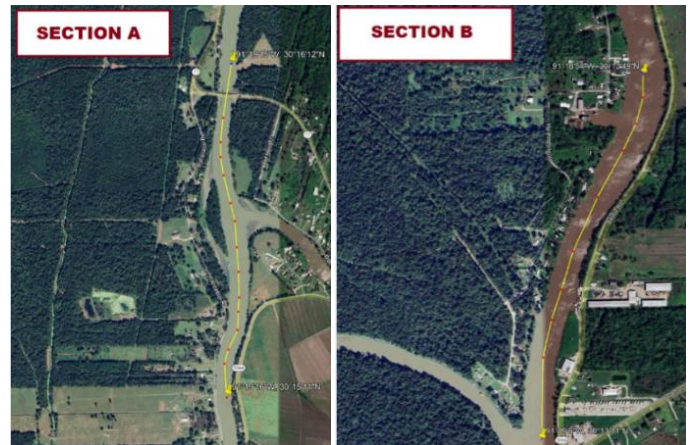
Date: September 23, 2024

Safety Advisory – Grosse Tête Swing Bridge Operating Schedule and No Wake Zone MM 45 – MM 47 Port Allen-Morgan City Alternate Route

****MSIB Volume XXIV Issue: 071 supersedes MSIB Volume XXIV Issue: 048 Update 05****

The Grosse Tete drawbridge across the Lower Grand River, Port Allen Alternate Route, MM 47, Grosse Tête, LA will operate under a deviated schedule from September 24, 2024 to December 31, 2024. During this time the draw will **open to vessel traffic from 10:00 A.M. to 1:00 P.M. and from 10:00 P.M. to 5:00 A.M., 7 days a week.** The draw bridge will not be open to marine traffic at all other times. Vessels should contact the bridge tender at (225) 659-1487, VHF CH. 13, or Coastal Contractors at (225) 379-1962 for additional information.

1. Mariners are advised to check in with the Grosse Tête Swing Bridge at MM 45 (if northbound) and MM47 (if southbound) via VHF CH. 13 & proceed at slowest safe speed to minimize wake while transiting.
2. The two no wake zones established by Iberville Parish will remain in place to protect public health and safety; vessels are to proceed at slowest safe speed.
 - a. Section A: covering a 1.18-mile navigable section of the Port Allen Alternate Route beginning 200 yards north of the Grosse Tête Bridge, then proceeding south to MM 45.5.
 - b. Section B: covering a .77-mile navigable section of the Port Allen Alternate Route beginning at MM 44 then proceeding south to MM 43.2 at Jack Millers Landing.



The vessel HELEN G CALYX will cease passenger ferry operations on September 25, 2024

For additional information, contact the following:

Gross Tete Swing Bridge: (225) 659-1487 or VHF CH. 13

Coast Guard Sector New Orleans Command Center: (504) 365-2200

Coast Guard MSU Baton Rouge Waterways Management: (225) 298-5400 x230

Iberville Parish: (225) 687-5190 or VHF CH.13

CAPTAIN GREGORY A. CALLAGHAN
Captain of the Port, New Orleans

For a current list of MSIBs within the COTP New Orleans Zone visit: <https://homeport.uscg.mil/port-directory/new-orleans> under "Safety Notifications"