

MARINE SAFETY INFORMATION BULLETIN

Volume XXIV Issue: 048 Update 06

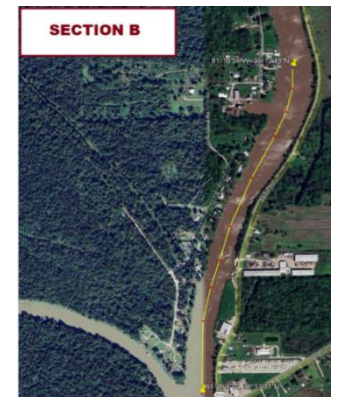
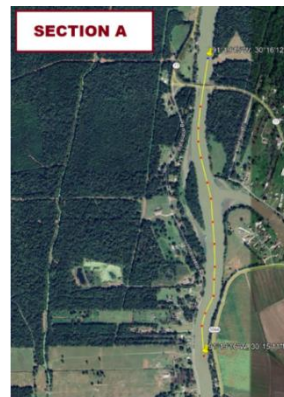
Time: 3:00 p.m.

Date: September 04, 2024

Safety Advisory – Grosse Tête Swing Bridge Survey, Repairs and Passenger Ferry Operations MM 45 – MM 47 Port Allen-Morgan City Alternate Route- Update 06

****Update**** The Coast Guard has established a safety zone from MM 45-47 on the Port Allen Route Monday through Friday from 6:00 A.M. to 8:00 A.M and from 2:30 P.M. to 4:30 P.M.**

1. The Coast Guard has established a safety zone from MM 45 to MM 47 on the Port Allen Route to facilitate Grosse Tete Bridge repairs and the movement of school students Monday through Friday from 6:00 A.M to 8:00 A.M. and from 2:30 P.M. to 4:30 P.M. except Federal Holidays. **Persons and Vessels are not to enter or transit the safety zone without COTP New Orleans approval.**
2. **Mariners are advised to check in with the Grosse Tête Swing Bridge at MM 45 (if northbound) and MM47 (if southbound) via VHF CH. 13 & proceed at slowest safe speed to minimize wake while transiting.**
3. **Two no wake zones** have been established by Iberville Parish to protect public health and safety; vessels are to proceed at slowest safe speed.
 - a. Section A: covering a 1.18-mile navigable section of the Port Allen Alternate Route beginning 200 yards north of the Grosse Tête Bridge, then proceeding south to MM 45.5.
 - b. Section B: covering a .77-mile navigable section of the Port Allen Alternate Route beginning at MM 44 then proceeding south to MM 43.2 at Jack Millers Landing.
4. The vessel HELEN G CALYX will conduct passenger ferry operations Saturday through Wednesday from 4:00 A.M. to 9:00 P.M. and Thursday through Friday 4:00 A.M. to 11:00 P.M. at MM 45.6. The operator of vessel HELEN G CALYX will monitor all vessel check ins via VHF CH. 13 while in operation.



For additional information, contact the following:

Gross Tete Swing Bridge: (225) 659-1487 or VHF CH. 13

Coast Guard Sector New Orleans Command Center: (504) 365-2200

Coast Guard MSU Baton Rouge Waterways Management: (225) 298-5400 x230

Iberville Parish: (225) 687-5190 or VHF CH.13

CAPTAIN GREGORY A. CALLAGHAN
Captain of the Port, New Orleans

MARINE SAFETY INFORMATION BULLETIN

Volume XXIV Issue: 048 Update 06

Time: 3:00 p.m.

Date: September 04, 2024

**Safety Advisory – Grosse Tête Swing Bridge Survey, Repairs and
Passenger Ferry Operations MM 45 – MM 47 Port Allen-Morgan City
Alternate Route- Update 06**

“For a current list of MSIBs within the COTP New Orleans Zone visit: <https://homeport.uscg.mil/port-directory/new-orleans> under “Safety Notifications”