

MARINE SAFETY INFORMATION BULLETIN

Volume XXIV Issue: 048 Update 05

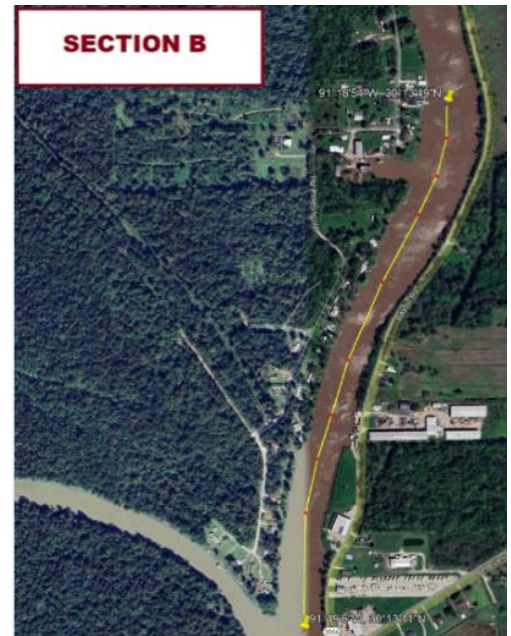
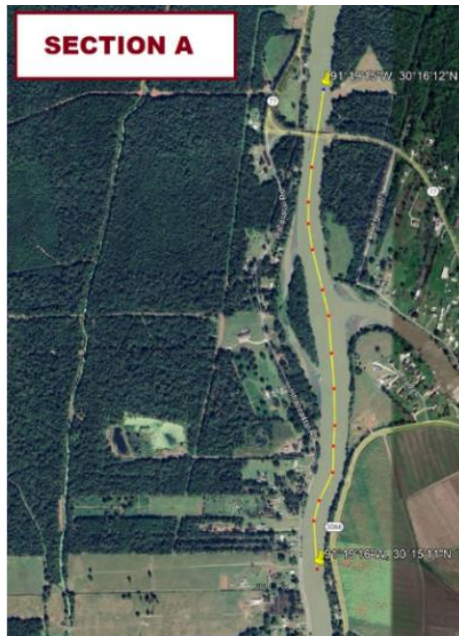
Time: 11:00 a.m.

Date: August 16, 2024

Safety Advisory – Grosse Tête Swing Bridge Survey, Repairs and Passenger Ferry Operations MM 45 – MM 47 Port Allen-Morgan City Alternate Route- Update 05

****Update**** The vessel HELEN G CALYX will conduct passenger ferry operations Saturday through Wednesday 4:00 A.M. to 9:00 P.M. and Thursday through Friday 4:00 A.M. to 11:00 P.M. at MM 45.6. The operator of vessel HELEN G CALYX will monitor all vessel check ins via VHF CH. 13 while in operation.

1. The Captain of the Port New Orleans is issuing a safety advisory for the waters of the Port Allen – Morgan City Alternate Route at Mile Marker (MM) 45 – 47 in the vicinity of the Grosse Tête swing bridge for survey, repairs, and passenger ferry operations following a vessel allision. The Grosse Tête swing bridge is currently locked in the open position and the waterway is open to all marine traffic.
2. The Coast Guard has established a safety zone within a 300-yard radius of the Grosse Tete passenger ferry to facilitate the movement of school students Monday through Friday from 6:00 A.M to 8:00 A.M. and from 2:30 P.M. to 4:30 P.M. except Federal Holidays. Persons and Vessels are not to enter or transit the safety zone without COTP New Orleans approval.
3. **Mariners are advised to check in with the Grosse Tête Swing Bridge at MM 45 (if northbound) and MM47 (if southbound) via VHF CH. 13 & proceed at slowest safe speed to minimize wake while transiting.**
4. **Two no wake zones** have been established by Iberville Parish to protect public health and safety; vessels are to proceed at slowest safe speed.
 - a. Section A: covering a 1.18-mile navigable section of the Port Allen Alternate Route beginning 200 yards north of the Grosse Tête Bridge, then proceeding south to MM 45.5.
 - b. Section B: covering a .77-mile navigable section of the Port Allen Alternate Route beginning at MM 44 then proceeding south to MM 43.2 at Jack Millers Landing.



“For a current list of MSIBs within the COTP New Orleans Zone visit: <https://homeport.uscg.mil/port-directory/new-orleans> under “Safety Notifications”

MARINE SAFETY INFORMATION BULLETIN

Volume XXIV Issue: 048 Update 05

Time: 11:00 a.m.

Date: August 16, 2024

Safety Advisory – Grosse Tête Swing Bridge Survey, Repairs and Passenger Ferry Operations MM 45 – MM 47 Port Allen-Morgan City Alternate Route- Update 05

5. The vessel HELEN G CALYX will conduct passenger ferry operations Saturday through Wednesday from 4:00 A.M. to 9:00 P.M. and Thursday through Friday 4:00 A.M. to 11:00 P.M. at MM 45.6. The operator of vessel HELEN G CALYX will monitor all vessel check ins via VHF CH. 13 while in operation.

For additional information, contact the following:

Gross Tete Swing Bridge: (225) 659-1487 or VHF CH. 13

Coast Guard Sector New Orleans Command Center: (504) 365-2200

Coast Guard MSU Baton Rouge Waterways Management: (225) 298-5400 x230

Iberville Parish: (225) 687-5190 or VHF CH.13



CAPTAIN GREGORY A. CALLAGHAN
Captain of the Port, New Orleans