

MARINE SAFETY INFORMATION BULLETIN

Volume XXIV Issue: 048 Update 02

Time: 1445

Date: July 17, 2024

Safety Advisory – Grosse Tête Swing Bridge Survey, Repairs and Passenger Ferry Operations MM 45 – MM 47 Port Allen-Morgan City Alternate Route- Update 02

****Update**** Two no wake zones have been established by Iberville Parish to protect public health and safety.

1. The Captain of the Port New Orleans is issuing a safety advisory for the waters of the Port Allen – Morgan City Alternate Route at Mile Marker (MM) 45 – 47 in the vicinity of the Grosse Tête swing bridge for survey, repairs, and passenger ferry operations following a vessel allision. The Grosse Tête swing bridge is currently locked in the open position and the waterway is open to all marine traffic.
2. **Mariners are advised to check in with the Grosse Tête Swing Bridge at MM 45 (if northbound) and MM47 (if southbound) via VHF CH. 13 & proceed at slowest safe speed to minimize wake while transiting.**
3. **Two no wake zones** have been established by Iberville Parish to protect public health and safety; vessels are to proceed at slowest safe speed.
 - a. Section A: covering a 1.18-mile navigable section of the Port Allen Alternate Route beginning 200 yards north of the Grosse Tête Bridge, then proceeding south to MM 45.5.
 - b. Section B: covering a .77-mile navigable section of the Port Allen Alternate Route beginning at MM 44 then proceeding south to MM 43.2 at Jack Millers Landing.
4. The vessel WOLFE will conduct passenger ferry operations seven days a week from 5:00 a.m. – 8:00 p.m. at MM 45.6. The operator of vessel WOLFE will monitor all vessel check ins via VHF CH. 13 while in operation.

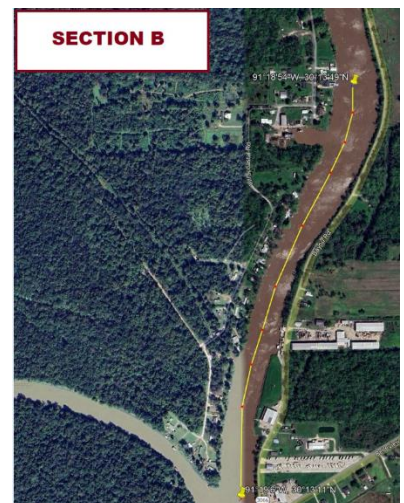
For additional information, contact the following:

Gross Tete Swing Bridge: (225) 659-1487 or VHF CH. 13

Coast Guard Sector New Orleans Command Center: (504) 365-2200

Coast Guard MSU Baton Rouge Waterways Management: (225) 298-5400 x230

Iberville Parish: (225) 687-5190 or VHF CH.13



MARINE SAFETY INFORMATION BULLETIN

Volume XXIV Issue: 048 Update 02

Time: 1445

Date: July 17, 2024

**Safety Advisory – Grosse Tête Swing Bridge Survey, Repairs and
Passenger Ferry Operations MM 45 – MM 47 Port Allen-Morgan City
Alternate Route- Update 02**



CAPTAIN GREGORY A. CALLAGHAN
Captain of the Port, New Orleans

“For a current list of MSIBs within the COTP New Orleans Zone visit: <https://homeport.uscg.mil/port-directory/new-orleans> under “Safety Notifications”