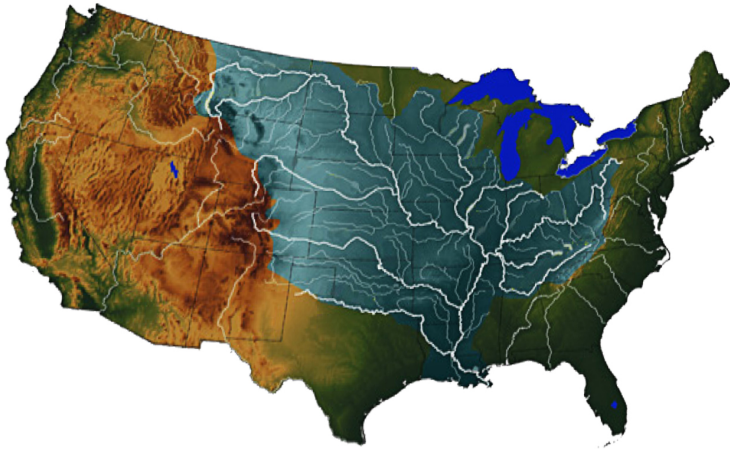


BIG RIVER COALITION



Sean M. Duffy, Sr.
Executive Director
4741 Utica Street, Suite 200
Metairie, LA 70006

Office (504) 833-4190 x 805
Cellular (504) 338-3165
sean.duffy@bigrivercoalition.org

June 1, 2018

Lower Mississippi River (LMR) Dredging Update 6118

Members,

The Corps of Engineers Mississippi Valley New Orleans (MVN) continues to respond to the shoaling in Southwest Pass and on the Crossings Above New Orleans created by the extended high river stages of early 2018. The MVN is actively dredging on the Crossings Above New Orleans with all three dustpan dredges and the industry hopper dredge GLENN EDWARDS working to restore the central 250 feet of the authorized channel width of 500 feet.

DRAFT RESTRICTIONS IN THE AREA OF SOUTHWEST PASS (SWP):

The Bar Pilots increased their maximum draft recommendation to 45 feet freshwater at 1000 hours on Wednesday, May 30, 2018. The previous maximum draft of 44 feet freshwater became effective at 1000 hours on Thursday, April 26, 2018.

The Crescent River Port Pilots Association increased their maximum draft recommendation to the 47 feet (freshwater).

The Federal Pilots also increased their maximum draft recommendation to 45 feet (freshwater) on May 30, 2018.

The controlling maximum draft recommendation for vessels transiting Southwest Pass remains 45 feet freshwater.

INDUSTRY HOPPER DREDGES IN SOUTHWEST PASS (SWP):

NEWPORT: The NEWPORT is presently dredging from 3.8 Below Head of Passes (BHP) to Mile 5.0 BHP. The industry hopper dredge (Manson Construction) commenced dredging in SWP on March 11, 2018 under Southwest Pass Hopper Dredge Rental Contract No. 2-2018. The NEWPORT is expected to complete this contract on or about June 19, 2018.

BAYPORT: The BAYPORT is presently dredging from Mile 20.0 BHP to Mile 22.0 BHP. The industry hopper dredge (Manson Construction) commenced dredging under Southwest Pass Hopper Dredge Rental Contract No. 3-2018 on Monday, March 12, 2018. The BAYPORT is expected to complete this contract on or about June 8, 2018.

CUTTERHEAD DREDGES IN SOUTHWEST PASS (SWP):

G.D. MORGAN: The industry cutterhead dredge G.D. MORGAN (Weeks Marine) continues to respond to Southwest Pass Cutterhead Dredge Rental Contract No. 2-2018. The cutterhead continues dredging from Mile 2.5 Above Head of Passes (AHP) to Mile 1.7 BHP on the right descending bank (westside) and is presently at Mile 1.25 AHP. All material removed will be beneficially used and strategically placed to create new land alongside the western boundary of SWP.

BIG RIVER COALITION

CUTTERHEAD DREDGES IN SOUTHWEST PASS (SWP): (continued)

ROBERT M. WHITE: The cutterhead dredge ROBERT M. WHITE (Manson Construction) is dredging from Mile 16.4 BHP to Mile 18.1 BHP on the left descending bank (eastside). The cutterhead dredge is presently working at Mile 17.64 BHP. The cutterhead began dredging in SWP under Southwest Pass Cutterhead Dredge Rental Contract No. 1-2018 on March 16, 2018. Upon completion of this assignment the cutterhead is expected to work from Mile 14.2 BHP to Mile 14.8 BHP also on the eastside. All material removed will be beneficially used and strategically placed to create new land alongside of SWP.

DUSTPAN DREDGES ON THE CROSSINGS ABOVE NEW ORLEANS:

HURLEY: The Corps' dustpan dredge HURLEY continues dredging the central 250 feet of the channel at Red Eye Crossing (Mile 224 AHP). The dustpan dredge began dredging on the Crossings on Wednesday, May 16, 2018.

WALLACE McGEORGE: The industry dustpan dredge WALLACE McGEORGE continues dredging at Alhambra Crossing (Mile 192 AHP) and is now expected to complete this assignment by Monday, June 4, 2018. The NOBRA and Federal Pilots are prohibiting vessel usage at the White Castle Anchorage (Mile 191.1 AHP to Mile 190.4 AHP) until the dustpan dredge completes this assignment. Managing the anchorage this way (keeping it clear) promotes navigational safety and allows the dredge to work without interruption. The WALLACE McGEORGE commenced dredging the central 250 feet at Alhambra Crossing on Friday, May 11, 2018.

JADWIN: The Corps' dustpan dredge JADWIN continues dredging the central 250 feet at Belmont Crossing (Mile 154 AHP). The JADWIN is expected to complete this assignment on June 7, 2019. The NOBRA and Federal Pilots will work to anchor vessels in the Belmont Anchorage (Mile 154 AHP to Mile 152.9 AHP) "as far east as possible" in effort to keep the Belmont Anchorage accessible while the dustpan dredge is working this location. The JADWIN began dredging on the Crossings on Thursday, May 10, 2018.

INDUSTRY HOPPER DREDGE ON THE CROSSINGS ABOVE NEW ORLEANS:

GLENN EDWARDS: The industry hopper dredge GLENN EDWARDS is expected to begin dredging the central 250 feet of channel at Medora Crossing (Mile 212 AHP) this evening (Friday, June 1, 2018). The industry hopper dredge GLENN EDWARDS (Manson Construction) commenced dredging in SWP on April 17, 2018. The GLENN EDWARDS is expected to complete this contract on or about June 19, 2018.

GOVERNMENT HOPPER DREDGE ON THE CROSSINGS ABOVE NEW ORLEANS:

WHEELER: The MVN's hopper dredge WHEELER has now completed its Red Flag hours after working at Bayou Goula Crossing (Mile 198.2 AHP) and is headed back to the MVN Dock at New Orleans. The Red Flag was granted in response to receiving no industry bids to Southwest Pass Hopper Dredge Contract No. 4-2018.

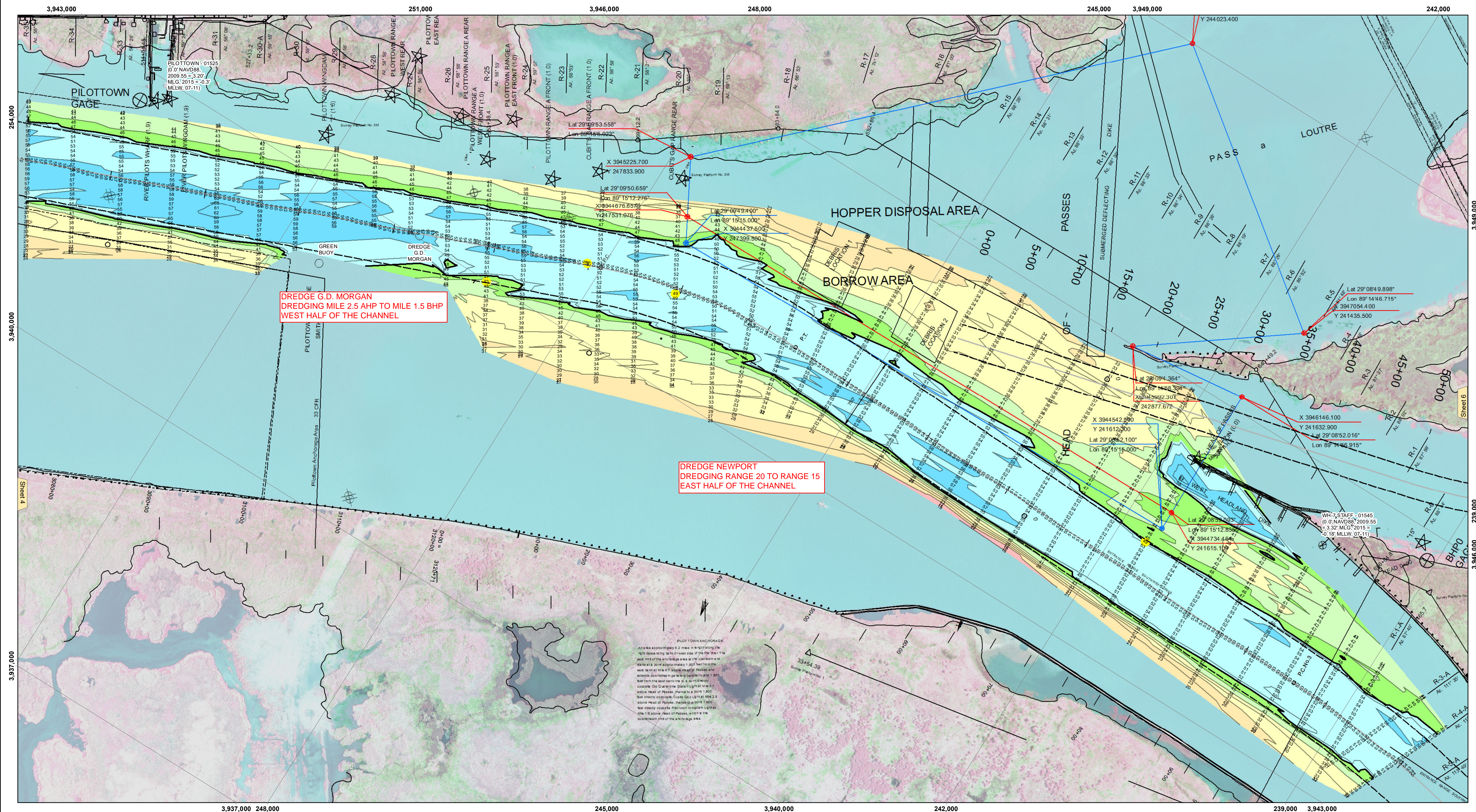
CUTTERHEAD DREDGE AT THE NEW ORLEANS HARBOR:

MIKE HOOKS: The MVN is working to finalize details on the cutterhead dredge contract awarded to Mike Hooks, Inc. to dredge the New Orleans Harbor. The cutterhead MIKE HOOKS is expected to respond to this contract, additional information on this contract will be provided once the details are finalized.

Sincerely,

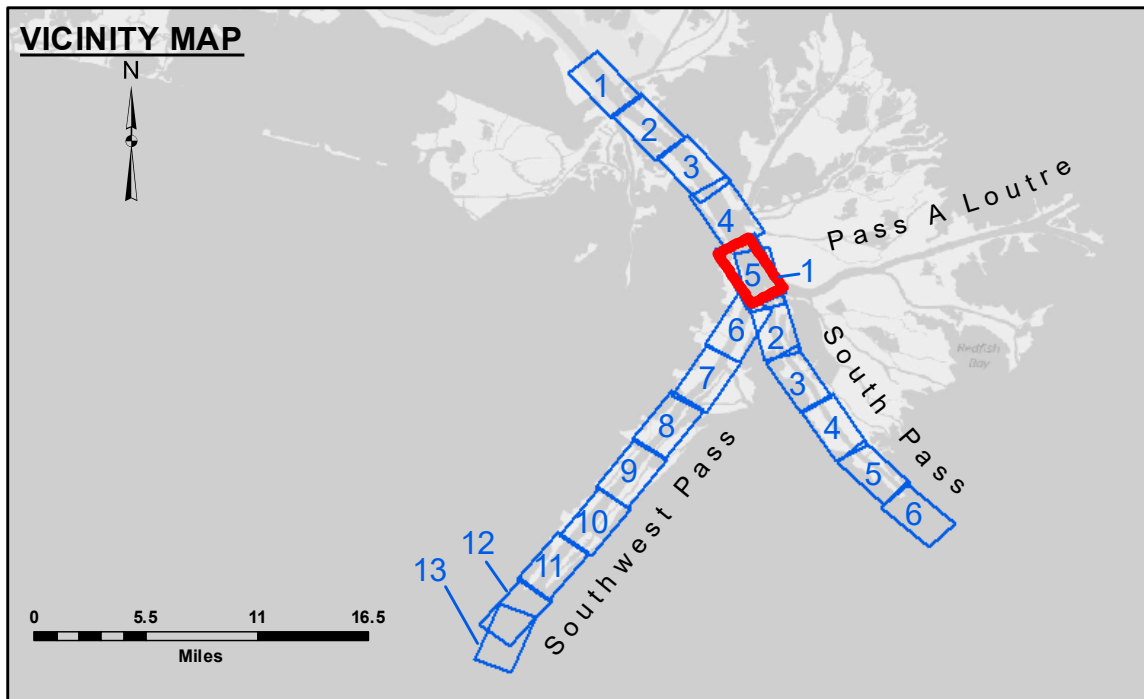
Sean M. Duffy, Sr.

Sean M. Duffy, Sr.
Executive Director

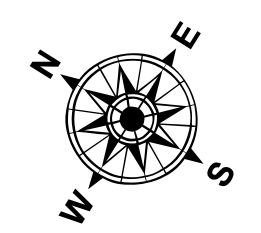


DREDGE G.D. MORGAN
DREDGING MILE 2.5 AHP TO MILE 1.5 BHP
WEST HALF OF THE CHANNEL

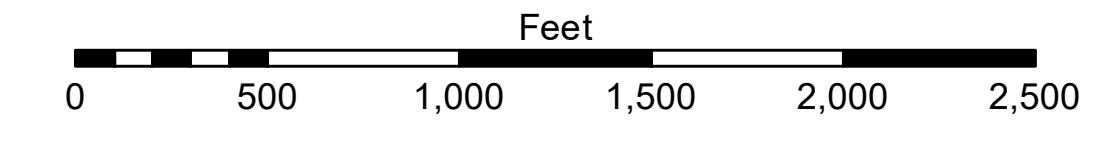
DREDGE NEWPORT
DREDGING RANGE 20 TO RANGE 15
EAST HALF OF THE CHANNEL



LEGEND			
— Federal Navigation Channel	● Cable Area	□ Borrow Area	■ -10' and above
— Federal Navigation Center Line	□ Placement Area	● Shoalest Sounding**	■ -10' to -20'
— As-built Pipeline/Cable	□ Anchorage Area	★ Beacon, General	■ -20' to -30'
..... Unconfirmed Pipeline/Cable	⊗ Obstruction Point	◆ Red Navigation Buoy	■ -30' to -40'
— Project Depth Contour	⚓ Wrecks-Submerged	◆ Green Navigation Buoy	■ -40' to -45'
			■ -45' to -48.5'
			■ -48.5' to -55'
			■ -55' and below



Gage Reading: 1.7 MLLW @ PILOT TOWN @ 0945
Sea Conditions: CALM
Vessel Name: BLANCHARD
Survey Type: CONDITION, SB
Sounding Frequency***: LOW



NOTES:
Horizontal Coordinate System: North American Datum of 1983 (NAD83), projected to the State Plane Coordinate System (SPCS), Louisiana South Zone. Distance units in U.S. Survey Feet.
Vertical Datum: Soundings are shown in feet and indicate depths below Mean Lower Low Water (MLLW, 07-11). Datum Relationships for gage 01525 as of July 2015: 0.0' NAVD83 = -0.3' MLLW = 3.20' MLG
Distances on the Mississippi River, above and below Head of Passes are shown at 1 mile intervals.
The location of navigation aids are base on and provided by the U.S. Coast Guard.
2016 Aerial Photography data source: Precision Aerial Reconnaissance, LLC (1998 DOQQ in green)
Reference is N.O.A. Navigation Chart No. 11361.
** Shoalest Sounding per Quarter per Reach.
*** High frequency (200 kHz) survey data represents the first signal return at a sounding location and will include suspended solids, known as "fluff", if present. Low frequency (24 kHz) survey data normally penetrates through this "fluff" layer to depict elevations of consolidated bottom material. Low frequency accuracies may vary depending on channel conditions and fathometer settings.

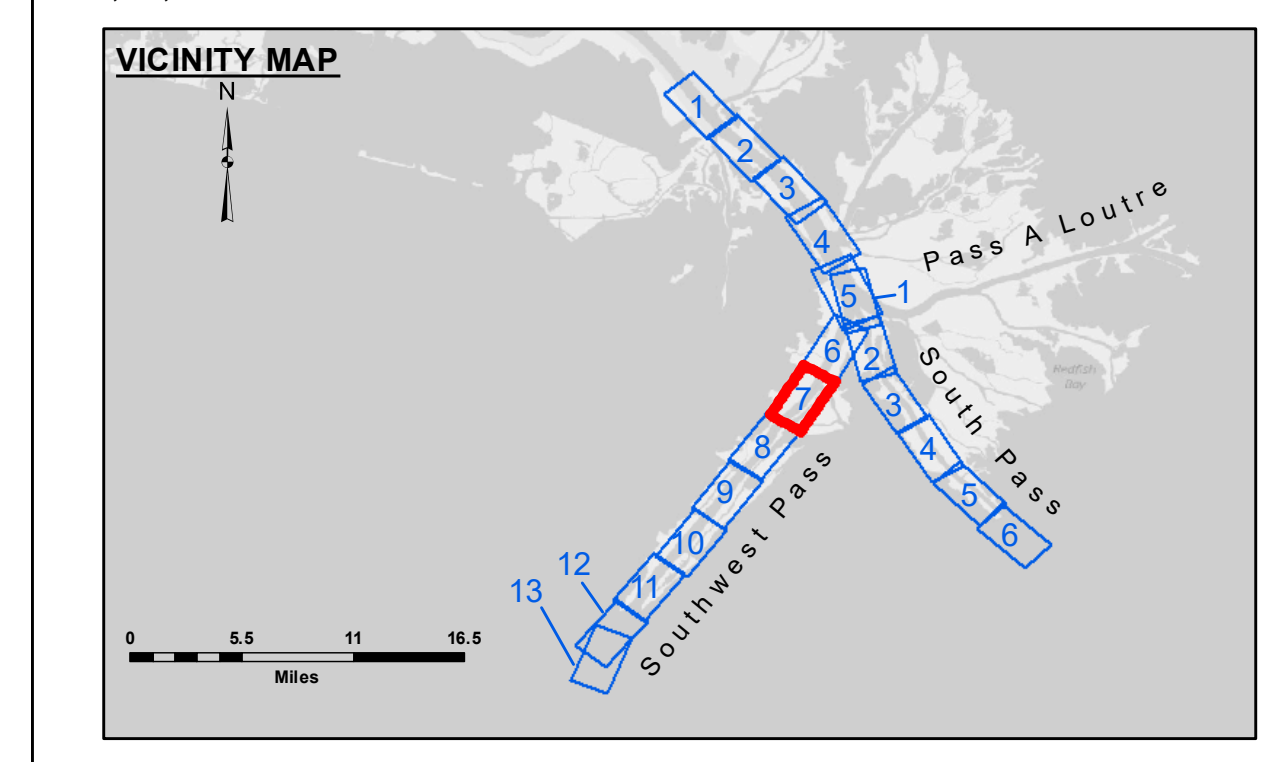
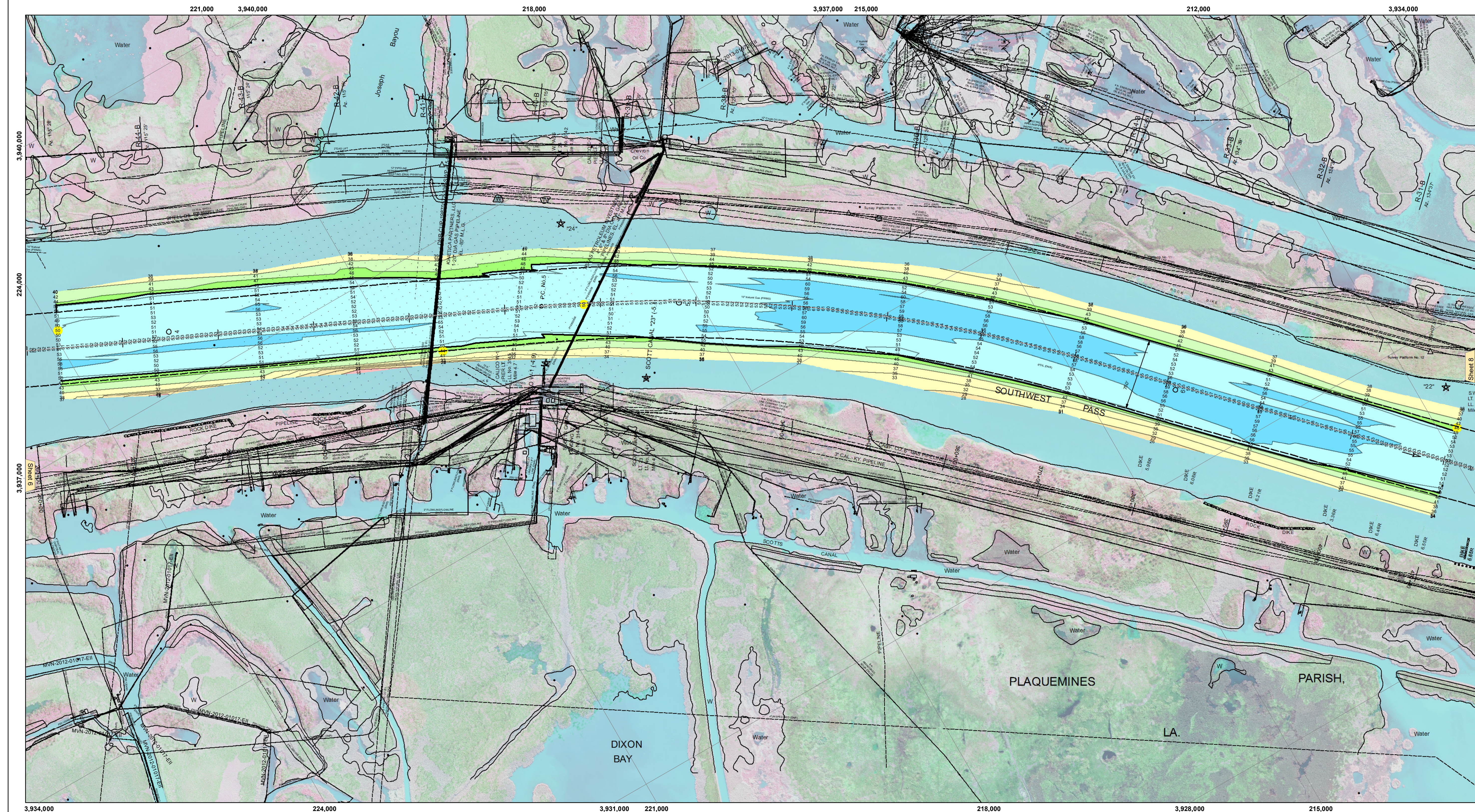


DISCLAIMER:
Access Constraints: The United States Government furnishes these data and the recipient accepts and uses them with the express understanding that the data are not to be used for any purpose other than that for which they were prepared, or implied concerning the accuracy, completeness, reliability, usability or suitability for any particular purpose of the recipient. The user is responsible for the results obtained from the use of these data. The user shall not be held liable under no liability whatsoever to any person by reason of any use of these data. These data are being made available to the public under no liability whatsoever to any person by reason of any use of these data. The recipient may not transfer, reproduce, or disseminate these data to others without also transmitting this Disclaimer. The information depicted on the map represents the results of the survey and is not to be used for any purpose other than that for which it was prepared. The Corps of Engineers does not warrant the accuracy of the information and shall not be held liable for any errors or omissions. The Corps of Engineers does not warrant the accuracy of the information and shall not be held liable for any errors or omissions. The Corps of Engineers does not warrant the accuracy of the information and shall not be held liable for any errors or omissions.

U.S. ARMY CORPS OF ENGINEERS NEW ORLEANS DISTRICT		
Submitted:	Surveyed By: JTB & DBD	Plotted By: TSS
Recommended:	Checked By: MSK	Checked By: MSK
Approved:	Checked By: MSK	Checked By: MSK

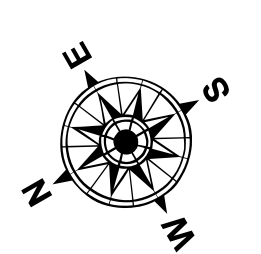
**MISSISSIPPI RIVER - B.R. TO GULF
SOUTHWEST PASS - SHEET 5
SW_05_SWP_20180531_CS
31 May 2018**

**Sheet Reference Number
5 of 13**
Revision Number:
3.13-20160811

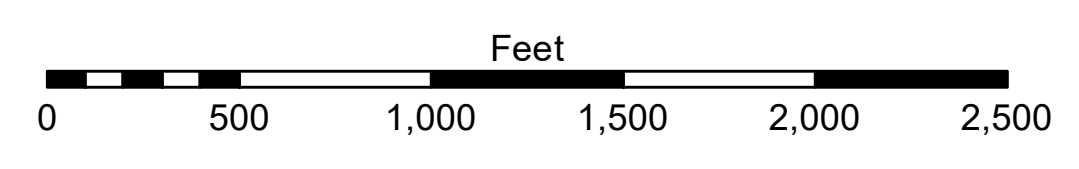


LEGEND

--- Federal Navigation Channel	○ Cable Area	□ Borrow Area	■ -10' and above
— Federal Navigation Center Line	□ Placement Area	● Shoalest Sounding**	■ -10' to -20'
— As-built Pipeline/Cable	□ Anchorage Area	★ Beacon, General	■ -20' to -30'
..... Unconfirmed Pipeline/Cable	⊗ Obstruction Point	◆ Red Navigation Buoy	■ -30' to -40'
— Project Depth Contour	⚓ Wrecks-Submerged	◆ Green Navigation Buoy	■ -40' to -45'
			■ -45' to -48.5'
			■ -48.5' to -55'
			■ -55' and below



Gage Reading: 1.6 MLLW @ HEAD OF PASSES @ 0900
 Sea Conditions: CALM, FLUFF
 Vessel Name: JOHN BOPP
 Survey Type: CONDITION, SB
 Sounding Frequency***: LOW



NOTES:
 Horizontal Coordinate System: North American Datum of 1983 (NAD83), projected to the State Plane Coordinate System (SPCS), Louisiana South Zone. Distance units in U.S. Survey Feet.
 Vertical Datum: Soundings are shown in feet and indicate depths below Mean Lower Low Water (MLLW, 07-11). Datum Relationships for gage 01545 as of July 2015: 0.0' NAVD83 = -0.18' MLLW = 3.32' MLG
 Distances on the Mississippi River, above and below Head of Passes are shown at 1 mile intervals.
 The location of navigation aids are base on and provided by the U.S. Coast Guard.
 2016 Aerial Photography data source: Precision Aerial Reconnaissance, LLC (1998 DOQQ in green)
 Reference is N.O.A. Navigation Chart No. 11361.
 ** Shoalest Sounding per Quarter per Reach.
 *** High frequency (200 kHz) survey data represents the first signal return at a sounding location and will include suspended solids, known as "fluff", if present. Low frequency (24 kHz) survey data normally penetrates through this "fluff" layer to depict elevations of consolidated bottom material. Low frequency accuracies may vary depending on channel conditions and fathometer settings.



DISCLAIMER:
 The United States Government furnishes these data and the recipient accepts and uses them with the express understanding that the data are not to be used for any purpose other than that for which they were prepared, or implied concerning the accuracy, completeness, reliability, usability, or availability for any particular purpose of the user. The user is responsible for the results of any use of the data. The United States Government makes no warranty, expressed or implied, under no liability whatsoever to any person by reason of any use of the data. These data are being made available to the public as a courtesy of the United States Government and are not to be used for any purpose other than that for which they were prepared. The information depicted on the map represents the results of a survey conducted on or about the date shown. The information is not to be used for any purpose other than that for which it was prepared. The information is not to be used for any purpose other than that for which it was prepared. The information is not to be used for any purpose other than that for which it was prepared.

U.S. ARMY CORPS OF ENGINEERS
 NEW ORLEANS DISTRICT

Submitted:	Surveyed By: HNP & TDG
Recommended: Chief, Survey Section	Plotted By: TSS
Approved: Chief, Waterways Maintenance Section	Checked By: MSK

**MISSISSIPPI RIVER - B.R. TO GULF
 SOUTHWEST PASS - SHEET 7
 SW_07_SWP_20180531_CS
 31 May 2018**

**Sheet Reference Number
 7 of 13**

Revision Number:
 3.13-20160811